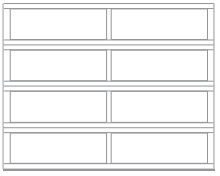




Shown in white with optional stockton window designs.

# 2294 RECESSED PANEL

LONG PANEL | 25 GAUGE STEEL | POLYURETHANE INSULATION | R-VALUE<sup>2</sup> R-12.35



## Window Designs



Plain



Stockton<sup>3</sup>



Madison<sup>3</sup>

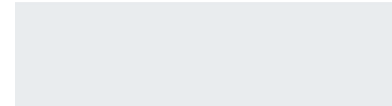
## Glass<sup>4</sup>



Plain



Tinted



Frosted

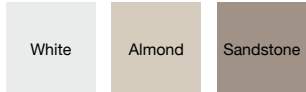


Obscure

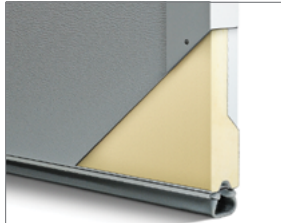


Glue Chip

## Colors<sup>1</sup>



## Insulation



Polystyrene Insulation  
R-value<sup>2</sup>  
**R-12.35**

<sup>1</sup> Refer to your local C.H.I. dealer for exact color match. <sup>2</sup> R-value testing is in accordance with ASTM C518 standards. <sup>3</sup> Window designs utilize vinyl dimensional grilles applied to the exterior of glass. <sup>4</sup> Textured or tinted glass lets light in while obscuring vision and improves the natural beauty of your home.

## APPEARANCE + LIFETIME PACKAGE

Upgrade lifetime protection plan to your garage door and its hardware. That not only sounds great but looks good too.



**C.H.I.  
HASSLE-FREE  
WARRANTY**

C.H.I. has a reputation for manufacturing quality garage doors, so it's only fitting that our hassle-free warranty outperforms all others.

Your Local Garage Door Professional

▶ Learn more at [www.chiohd.com/2294](http://www.chiohd.com/2294)



[www.chiohd.com](http://www.chiohd.com)

1485 Sunrise Drive | Arthur, IL 61911 | USA