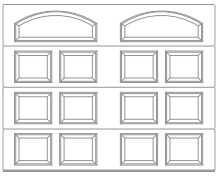


Shown in mahogany woodtone.

# 2752 FIBERGLASS

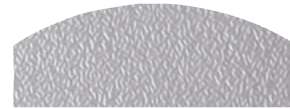
SHORT PANEL, LONG ARCHED TOP | POLYURETHANE INSULATION | R-VALUE<sup>2</sup> R-16.95



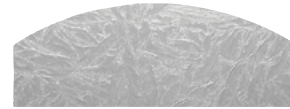
### Glass<sup>3</sup>



Long Arched Plain



Long Arched Obscure



Long Arched Glue Chip

### Designer Glass<sup>4</sup>



Long Arched Somerset (brass caming)



Long Arched Somerset (platinum caming)

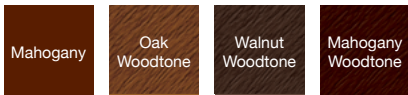


Long Arched Monticello (brass caming)

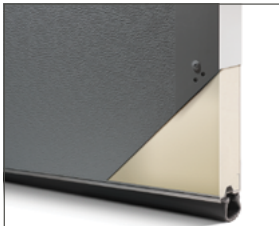


Long Arched Monticello (platinum caming)

### Colors<sup>1</sup>



### Colors<sup>1</sup>



Polyurethane Insulation  
R-value<sup>2</sup>  
**R-16.95**

<sup>1</sup> Refer to your local C.H.I. dealer for exact color match. <sup>2</sup> R-value testing is in accordance with ASTM C518 standards. <sup>3</sup> All glass is either transparent or semi-transparent. <sup>4</sup> Designer glass uses an acrylic face with brass or platinum caming and an obscure back.

## APPEARANCE + LIFETIME PACKAGE

Upgrade lifetime protection plan to your garage door and its hardware. That not only sounds great but looks good too.



## C.H.I. HASSLE-FREE WARRANTY

C.H.I. has a reputation for manufacturing quality garage doors, so it's only fitting that our hassle-free warranty outperforms all others.

Your Local Garage Door Professional

▶ Learn more at [www.chiohd.com/2752](http://www.chiohd.com/2752)