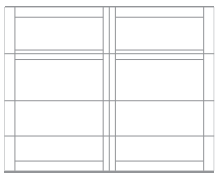




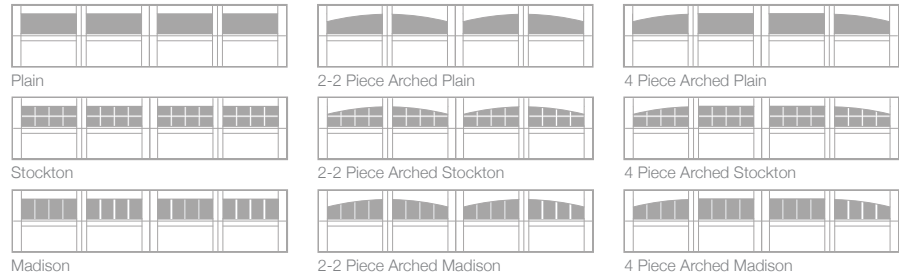
5633A shown in white with optional arched madison window design and wrought iron hardware.

5600 SERIES OVERLAY CARRIAGE HOUSE

STEEL OVERLAY | POLYURETHANE INSULATION | R-VALUE² R-17.54



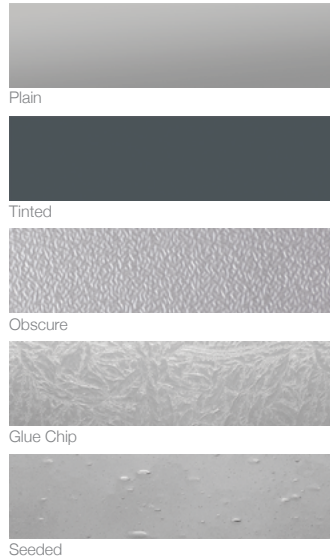
Single Row Window Designs



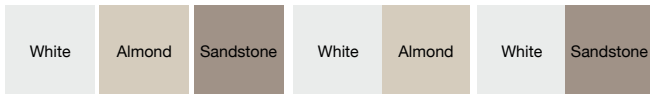
Double Row Window Designs



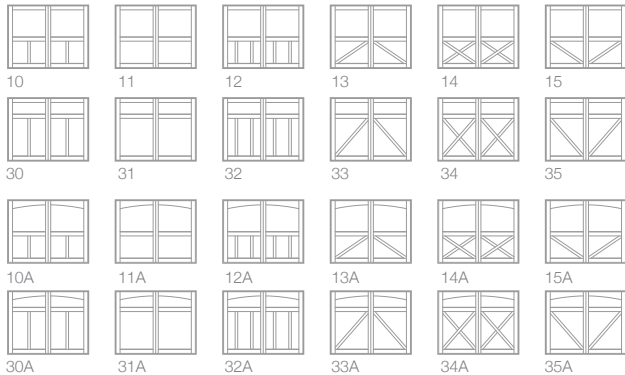
Glass³



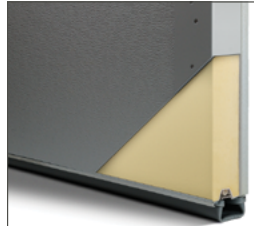
Colors¹



Door Designs



Insulation



Polyurethane Insulation
R-value²
R-17.54

Exterior Hardware



1 Refer to your local C.H.I. dealer for exact color match. **2** R-value testing is in accordance with ASTM C518 standards. **3** Textured or tinted glass lets light in while obscuring vision and improves the natural beauty of your home. **4** Overlays and windows are always white.

Give the illusion of installed tinted windows and keep the integrity of the door intact. Available as an option with all overlay window sections.

These garage doors are available as wind load doors. Refer to your local C.H.I. Dealer if wind load doors are required where you live.

C.H.I. has a reputation for manufacturing quality garage doors, so it's only fitting that our hassle-free warranty outperforms all others.

Your Local Garage Door Professional

▶ Learn more at www.chiohd.com/5600



www.chiohd.com

1485 Sunrise Drive | Arthur, IL 61911 | USA