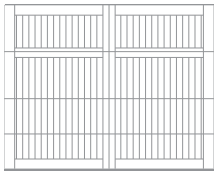




5731A shown with field-stained cedar wood and optional wrought iron hardware.

# 5700 SERIES OVERLAY CARRIAGE HOUSE

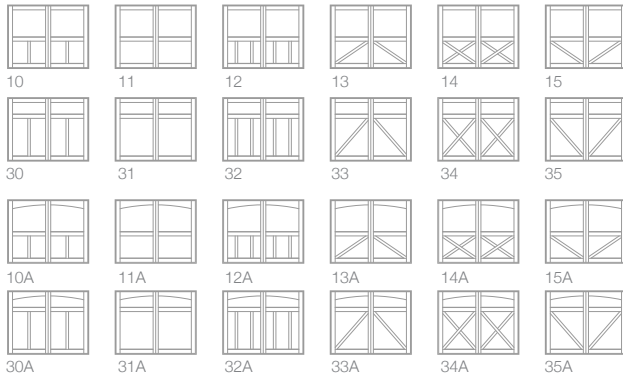
WOOD OVERLAY | POLYURETHANE INSULATION | R-VALUE<sup>2</sup> R-18.03



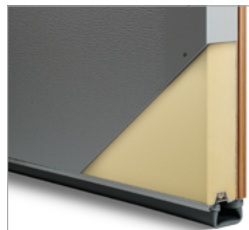
## Woods<sup>1</sup>



## Door Designs



## Insulation



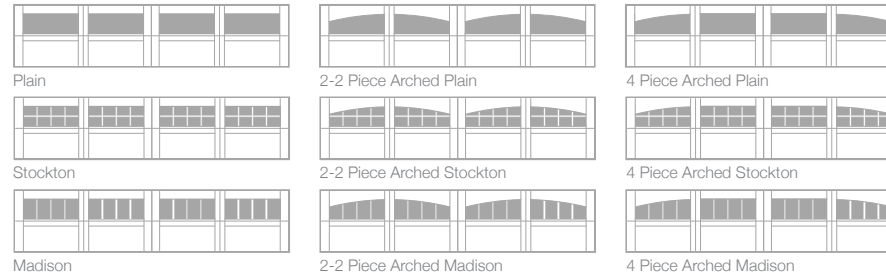
Polyurethane Insulation  
R-value<sup>2</sup>

**R-18.03**

## Exterior Hardware



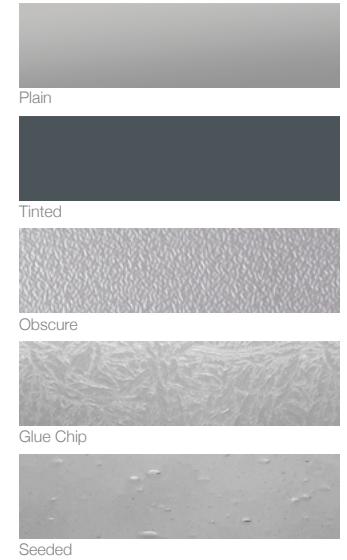
## Single Row Window Designs



## Double Row Window Designs



## Glass<sup>3</sup>



**1** Wood types are Western Red Cedar and Fijian Mahogany. **2** R-value testing is in accordance with ASTM C518 standards. **3** Textured or tinted glass lets light in while obscuring vision and improves the natural beauty of your home.



## FAUX WINDOWS

Give the illusion of installed tinted windows and keep the integrity of the door intact. Available as an option with all overlay window sections.



These garage doors are available as wind load doors. Refer to your local C.H.I. Dealer if wind load doors are required where you live.



## C.H.I. HASSLE-FREE WARRANTY

C.H.I. has a reputation for manufacturing quality garage doors, so it's only fitting that our hassle-free warranty outperforms all others.

Your Local Garage Door Professional

▶ Learn more at [www.chiohd.com/5700](http://www.chiohd.com/5700)



[www.chiohd.com](http://www.chiohd.com)

1485 Sunrise Drive | Arthur, IL 61911 | USA