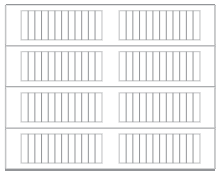


Shown in accents woodtones cedar with spade hardware.

5983

STAMPED CARRIAGE HOUSE

LONG PANEL | 27 GAUGE STEEL | POLYSTYRENE INSULATION | R-VALUE² R-9.65



Inserts



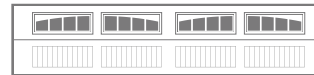
Stockton



Madison



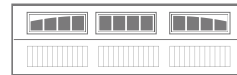
2-2 Piece Arched Stockton



2-2 Piece Arched Madison



3 Piece Arched Stockton



3 Piece Arched Madison



4 Piece Arched Stockton



4 Piece Arched Madison



Cascade

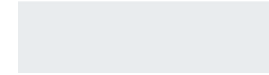
Glass³



Plain



Tinted



Frosted



Obscure

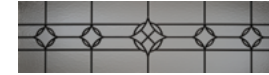


Glue Chip



Seeded

Designer Glass⁴



Newport



Hampton



Lasalle⁵

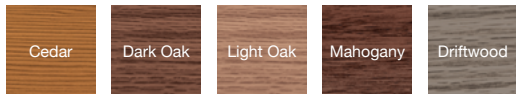


Florence

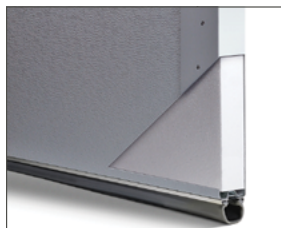
Colors¹



Accents Woodtones



Insulation



Polystyrene Insulation
R-value²
R-9.65

Exterior Hardware



¹ Refer to your local C.H.I. dealer for exact color match. ² R-value testing is in accordance with ASTM C518 standards. ³ Textured or tinted glass lets light in while obscuring vision and improves the natural beauty of your home. ⁴ All designer glass are either transparent or semi-transparent. ⁵ Available in 21" sections only.

APPEARANCE + LIFETIME PACKAGE

Upgrade lifetime protection plan to your garage door and its hardware. That not only sounds great but looks good too.



These garage doors are available as wind load doors. Refer to your local C.H.I. Dealer if wind load doors are required where you live.



C.H.I. HASSLE-FREE WARRANTY

C.H.I. has a reputation for manufacturing quality garage doors, so it's only fitting that our hassle-free warranty outperforms all others.

Your Local Garage Door Professional

▶ Learn more at www.chiohd.com/5983

